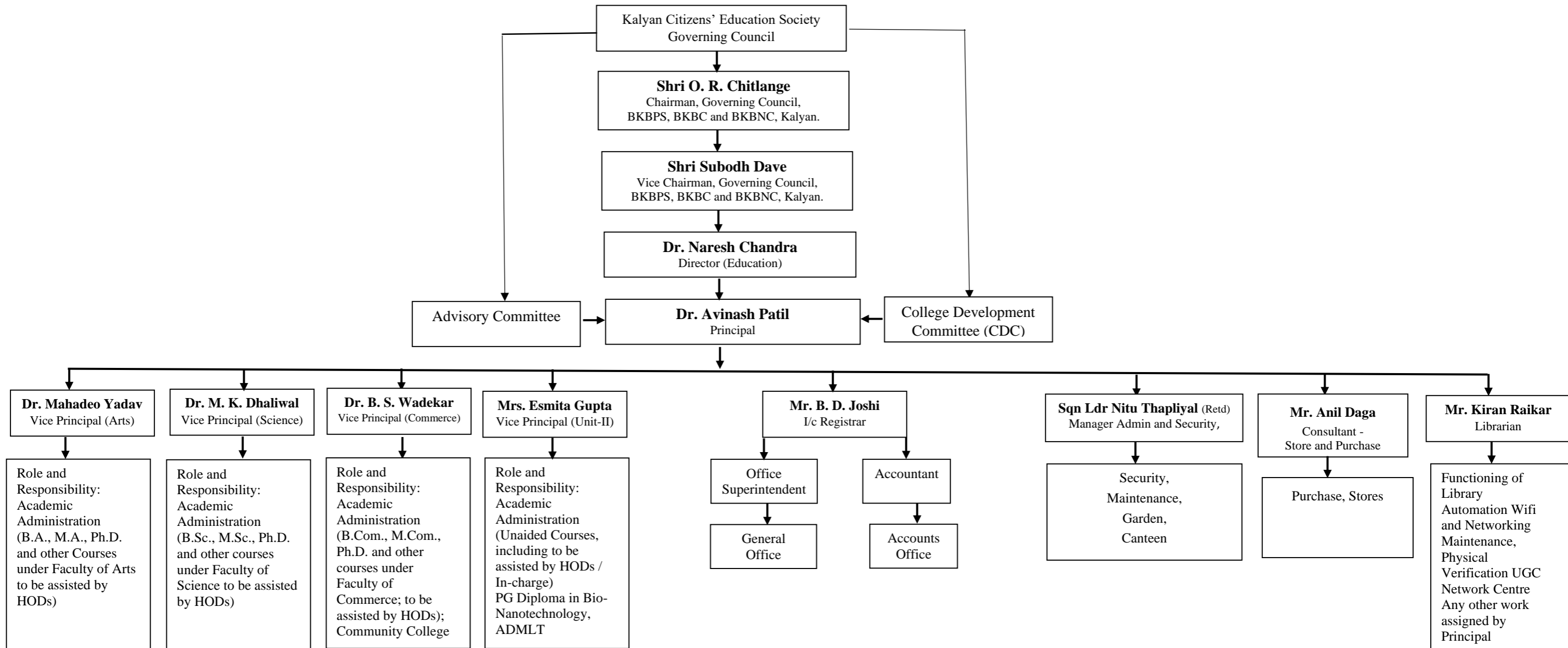


B. K. Birla College of Arts, Science & Commerce (Autonomous), Kalyan

Degree College (2022-23)

Organization Chart



NIRF /India
Today/The Week
Rankings; BoS (Arts);
Academic Council;
Governing Body;
Vision; Workload and
Time Table; Activity
Calendar;
Appointments (Arts
Faculty); Faculty
Enrichment Programs
/ Faculty
Development
Program; Students
Council, Students
Welfare; Sports and
Gymkhana; Degree
Distribution Function;
To promote Research,
Collaborations,
Training Programs;
News letter; Internal
Examinations (Arts),
Result Analysis
(Arts)
New Initiatives; *TQM*
(Arts); Industry –
Academia Interface;
Image Building, PR,
Publicity,
Media Relations;
Placement Activity;
Faculty Exchange
within the University,
State, India and
Abroad; Organizing
Seminars / Workshops
/ Conferences /
Symposium; Social
Science Association,
Marathi, English and
Hindi Literary
Association, Center for
Epigraphy; Any other
work assigned by the
Principal

NIRF /India
Today/The Week
Rankings; BoS
(Science); Academic
Council; Vision;
Workload and Time
Table; Activity
Calendar; UGC,
FIST, DBT-Star
College Scheme;
Maintenance and
Campus, Ambience;
Gardening, Waste
Management;
Counselling Cell; To
promote Research,
Collaborations,
Training Programs;
News letter; Internal
Examinations
(Science) Result
Analysis (Science);
New Initiatives; *TQM*
(Science); Industry –
Academia Interface;
Image Building, PR,
Publicity,
Media Relations;
Placement Activity;
Faculty Exchange
within the University,
State, India and
Abroad; Organizing
Seminars / Workshops
/ Conferences /
Symposium; Science
Association, Nature
Club, Innovation Club,
Campus; Any other
work assigned by the
Principal

NIRF /India
Today/The Week
Rankings; BoS
(Commerce);
Academic Council;
Vision; Workload
and Time Table;
Activity Calendar;
Appointments
(Commerce
Faculty); NSS,
DLLE, Alumni
Association
Counselling Cell,
Career Counselling;
Prize Distribution
Function; To
promote Research,
Collaborations,
Training Programs;
News Letter;
Internal
Examinations
(Commerce),
Result Analysis
(Commerce)
New Initiatives; *TQM*
(Commerce); Industry
– Academia Interface;
Image Building, PR,
Publicity,
Media Relations;
Placement Activity;
Organizing Seminars /
Workshops /
Conferences /
Symposium;
Commerce
Association; Any
other work assigned
by the Principal

NIRF /India
Today/The Week
Rankings;
Bos (Unit - II);
Academic Council;
Vision; Workload and
Time Table; Activity
Calendar;
Appointments (Unit
II); DBT-Star College
Scheme; ICT enabled
Service
Birla College
Repository /
Depository; Career
Counselling; Prize
Distribution Function;
To promote Research,
Collaborations,
Training Programs;
News letter; Internal
Examinations (Unit -
II), Result Analysis
(Unit - II)
New Initiatives; *TQM*
(Unit II), Industry –
Academia Interface,
Image Building, PR,
Publicity,
Media Relations;
Placement Activity;
Organizing Seminars /
Workshops /
Conferences /
Symposium; Any
other work assigned
by the Principal